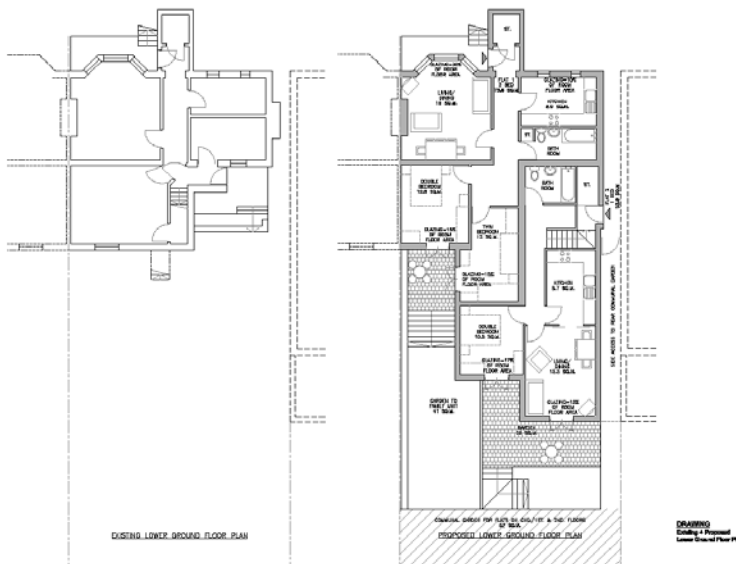
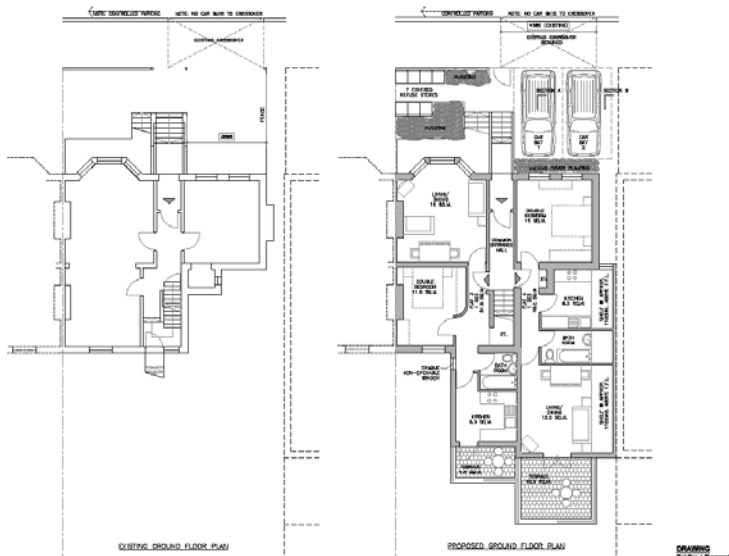




COMPLETED PROJECT VANT ROAD, WANDSWORTH



CONVERSION OF A LONDON TOWNHOUSE INTO SEVEN SELF-CONTAINED FLATS

This double fronted but shallow plan property would have accommodated one flat on each of three floors. We saw unexpected potential to the rear and in the half basement, and gained a Delegated Approval (with no delay in waiting for planning committee decision) for an extraordinary seven flats for a delighted client.