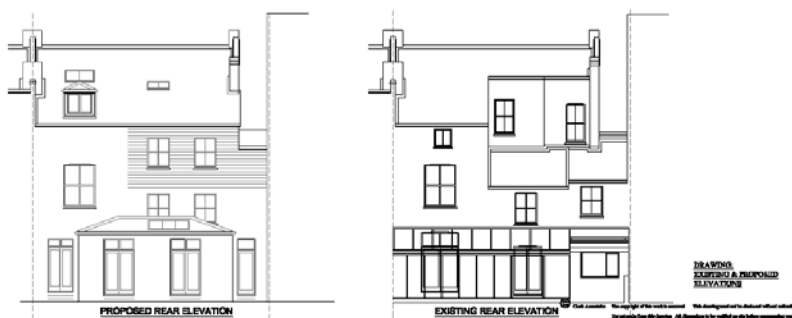
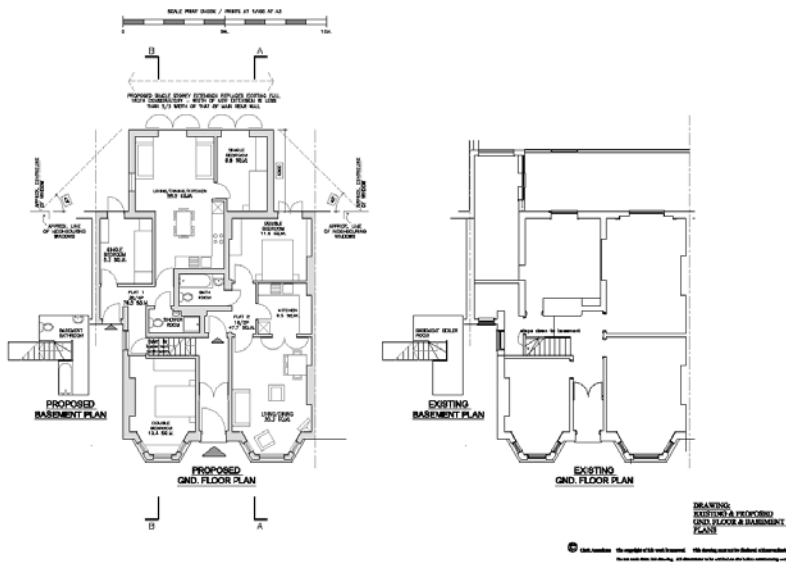


**COMPLETED PROJECT  
LAMBERT ROAD, LAMBETH**



**CONVERSION OF A LONDON TOWNHOUSE INTO FIVE SELF-CONTAINED FLATS**

**DEVELOPER/BUILDER CLIENT**

This property could have comfortably accommodated three self-contained flats, and four flats would have been a financially robust target.

By a thorough and detailed design development, we obtained a Planning Permission for five units, which our client was delighted to obtain.

This design was conceived specifically for our client to sell some flats and retain others as part of a long term letting portfolio.